

Because every print should be a masterpiece.



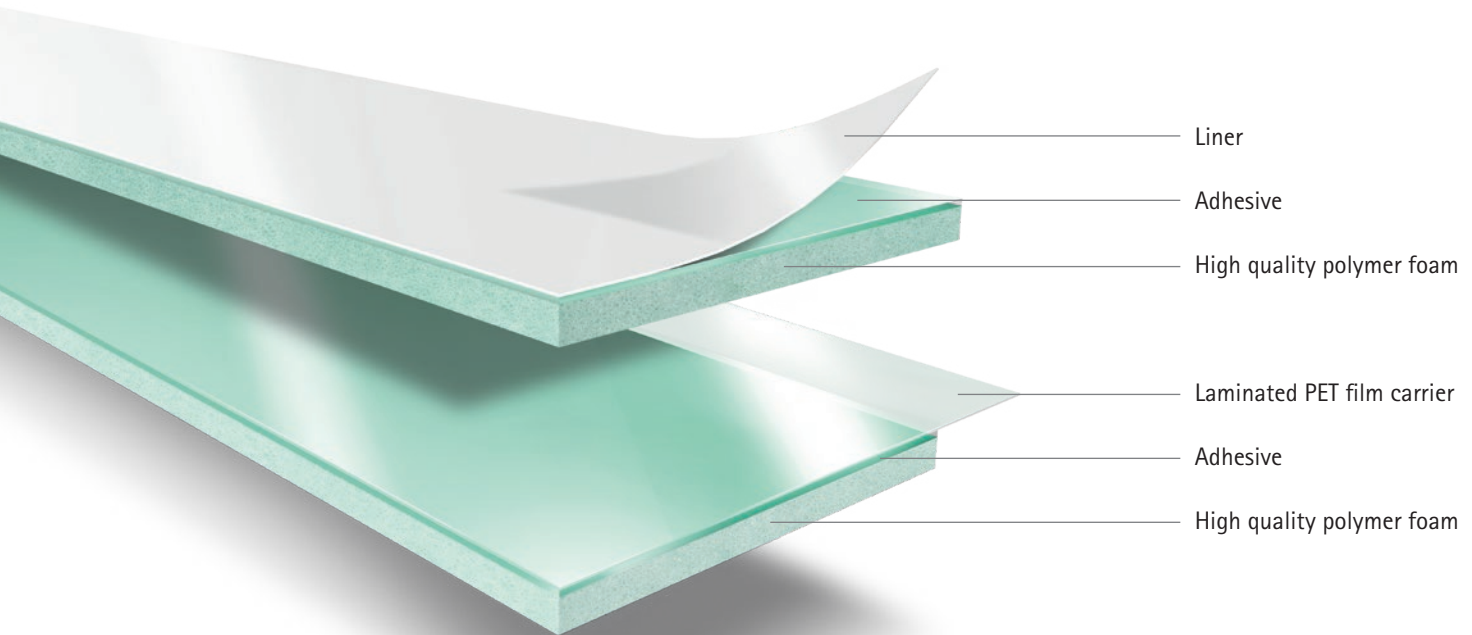
DuploFLEX® CB

The compressible base for the highest demands
in high quality post print.

The art of always having the right solution

The answer to demanding flexo printing needs – whatever the application.

Ever-increasing customer requirements and complex print jobs place high demands on today's flexographic printing. Professionals like you are therefore forced to increasingly optimize their processes in order to remain competitive. This rings true especially for high quality post print, because here, packaging serves more than just a protective function. More than ever, it is an inherent part of every product, setting the stage for brand presentation – providing a visual and tactile experience at Point-of-Sale. The prerequisite for this is a brilliant print image and individual solutions revolving around plate mounting.



Lohmann plate mounting tapes – that surpass the standards by far.

As one of the world's leading suppliers of plate mounting tapes, we at Lohmann know what is needed in flexo printing today: customized solutions that meet the individual needs of our diverse customers. This is precisely what Lohmann now offers you in the area of high quality post print – with DuploFLEX® CB (Corrugated Board). It goes without saying that we maintain the familiar DuploFLEX® premium quality standard. This has set the benchmark world-wide for plate mounting in flexo printing and helps you to make every print a masterpiece.

The world-renowned, high level of quality is no coincidence. Whether through a solution-oriented consultation, our FlexoLAB, or state-of-the-art manufacturing processes – every mounting tape contains the entire expertise of our specialists. Moreover, you can also count on us when you need support in optimizing your processes. Our experienced application engineers are always at your disposal.

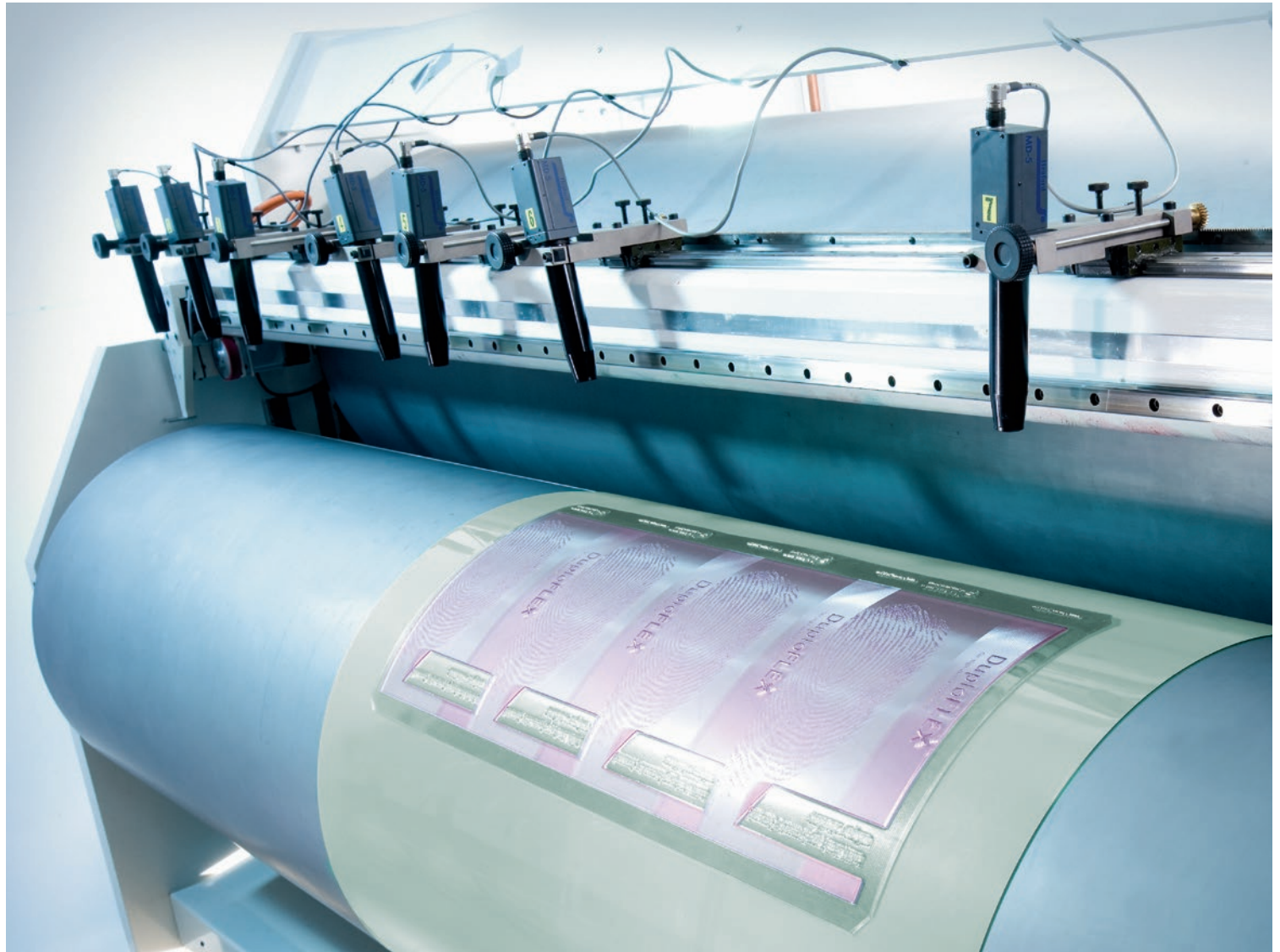
We are first choice when it comes to adhesive tape solutions in flexo printing.

Most sophisticated production processes: guarantee first class solutions.

Perfect print results, even with high screen resolutions.

DuploFLEX® CB: perfect for all high quality post print requirements.





High quality polymer foam

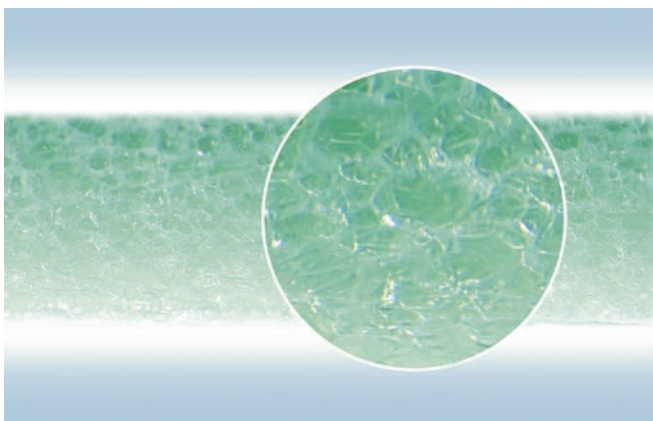
The art of consistently producing premium quality.

Partnered with the comprehensive expertise that Lohmann has gained in label printing and flexible packaging, the DuploFLEX® CB range is the best proof of our long-standing experience in flexo printing. This is one of the contributing factors to our worldwide success.

Thus, the high quality polymer foam that has already proved itself with its excellent performance in the DuploFLEX® HP range, again

finds utilization in the DuploFLEX® CB range. Due to its closed cell structure, it convinces with its rapid recovery behavior and a highly stable compressibility. Because of this, "wash-board" effects are significantly reduced and – depending on the type of corrugation – even avoided.

Equally important is the fact that our high quality polymer foam, unlike open foams, is water and color resistant.



Closed cell for excellent performance:
The high quality polymer foam from Lohmann.

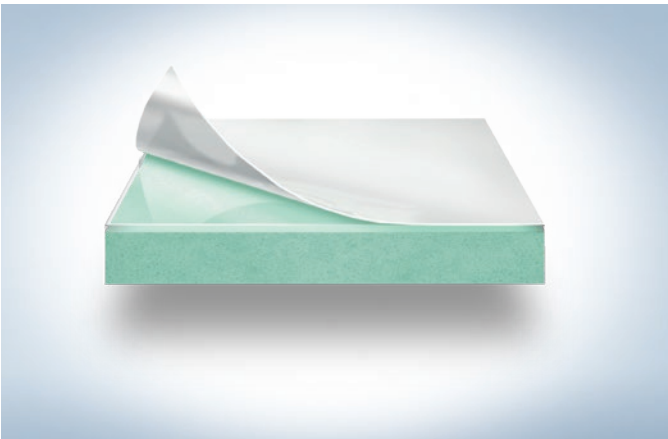
Leaves nothing to be desired: DuploFLEX® CB

For artistically perfect results in high quality post print.

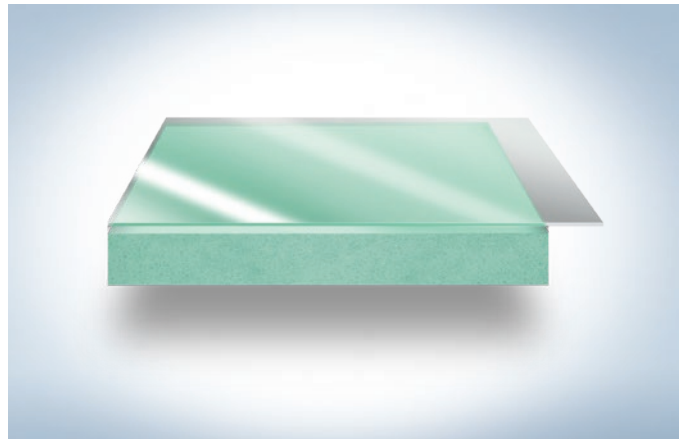
Would you like to know which CB solution we recommend for which requirement? Whether with a PET film carrier or self-adhesive on one side, whether with thick or thin foam – whatever your needs, our range provides you with the tools to create perfect results in high

quality post print. A further advantage: all DuploFLEX® CB packaging is 100 % recyclable, which is easy on the environment and keeps your disposal expenses at a low level.

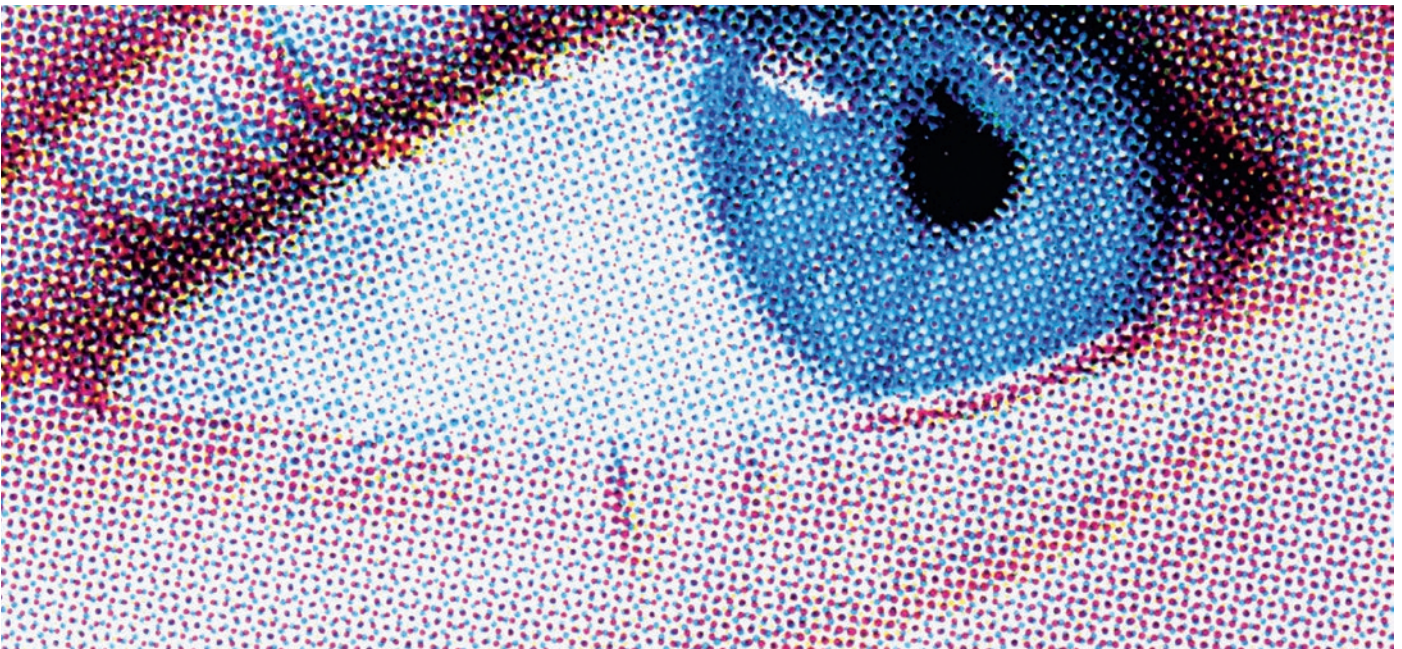
DuploFLEX® CB self-adhesive on one side



DuploFLEX® CB with PET film carrier



DuploFLEX® CB: for perfect print results on corrugated board.



The benchmark for high quality post print

The art of creating competitive advantages with quality.

In today's printing business, Lohmann's name is inseparably connected with the DuploFLEX® brand, which is in the meantime the benchmark in plate mounting. Our DuploFLEX® CB range is at your disposal as a solution-oriented kit leaving nothing to be desired – whether you handle your own lamination process or utilize a prelaminated, compressible base, in order to meet the most sophisticated printing needs. The PET film carrier extended on one side makes the handling of our bases especially easy, by means of a quick fixing of the edging strip.

DuploFLEX® CB is not only suitable for all standard printing plates, but also supports the complete range of flat-top-dot technologies and surface screening processes, resulting in the brilliant prints demanded by today's brands.

What advantages do you have from the uncompromising DuploFLEX® quality? Expect perfect print results, which create crucial advantages over your competition. Because we believe that every print should be a masterpiece.

Your demand:

Perfect results for every print job,
even at high press speeds

The DuploFLEX® solution:

Premium quality

- Reduced wash boarding effect
- Optimal resilience
- No uncontrolled dot gain
- Perfect print-outs on the most varied flutes
- Water and color-resistant
- Brilliant print image also with flat-top-dot and surface screening technologies

Solution-oriented product selection

- Personal advice
- Selection of various thicknesses, with either a PET film carrier or self-adhesive on one side
- Upon request, we will be happy to assist you with customized solutions

Perfect handling

- Easy alignment thanks to the closed cell foam surface
- Unidirectional prefabricated product setup for easy fixation of the edging strip

Your advantage:

A decisive, competitive edge

The art of always having the right material.

DuploFLEX® – a portfolio for all situations

Flexible packaging, labels, corrugated board: No matter what kind of flexo printing is involved – with the DuploFLEX® portfolio you can always rely on an uncompromising quality. Even under the most difficult conditions. More about the individual advantages of our plate mounting tape solutions can be found in the new DuploFLEX® brochures.



DuploFLEX® Guide



DuploFLEX® 3 | 4



DuploFLEX® 5

www.lohmann-flexperts.com

76213/0718/en

Lohmann GmbH & Co. KG
Irlicher Straße 55
56567 Neuwied/Deutschland
Phone: +49 2631 34-0
Fax: +49 2631 34-6661
graphics@lohmann-tapes.com
www.lohmann-tapes.com



certified since 2011

Lohmann
The Bonding Engineers