



SIMEC GROUP

MORE THAN ENGRAVINGS

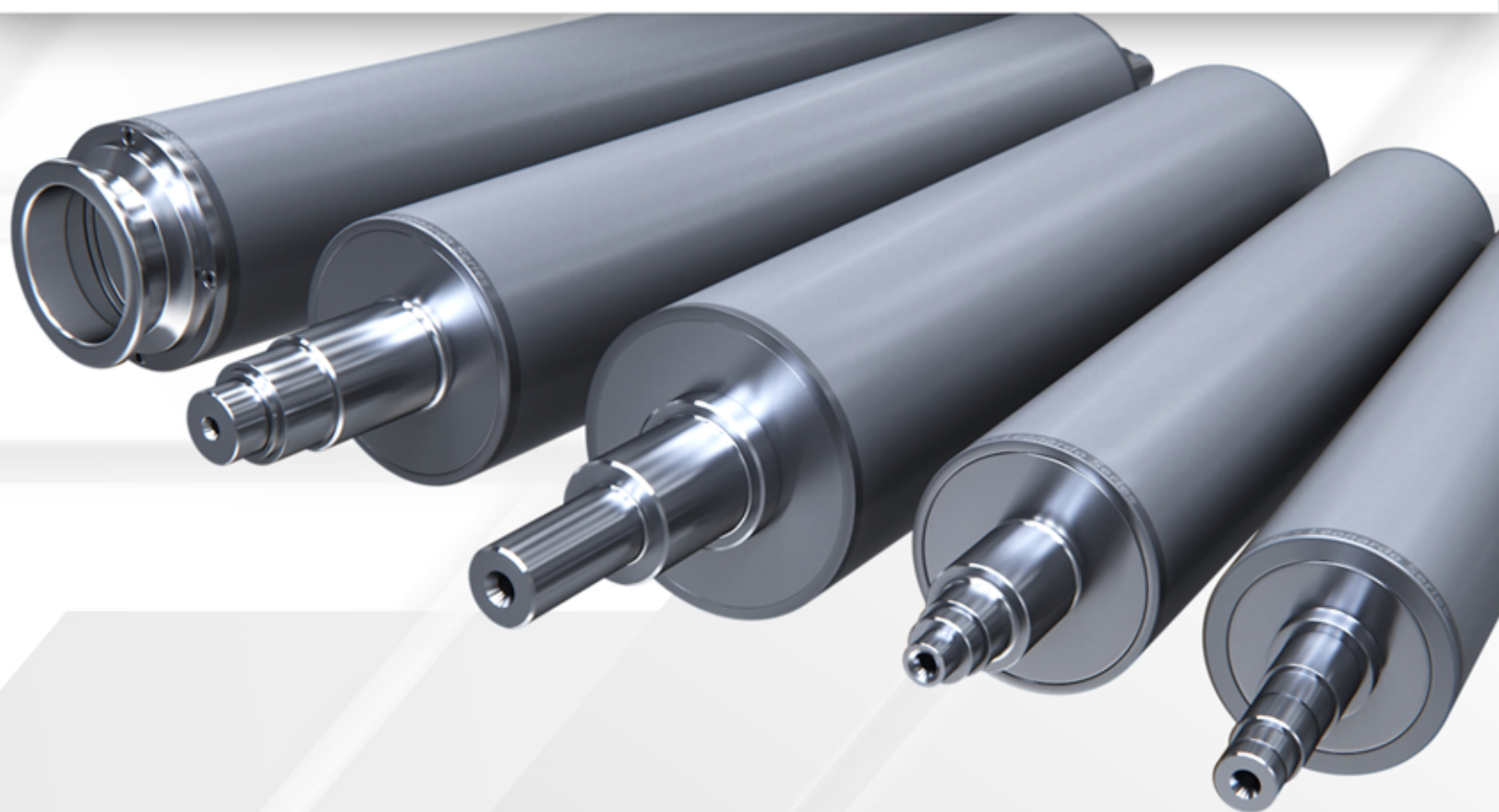


STARLOX

SIMEC GROUP

SINCE 1987

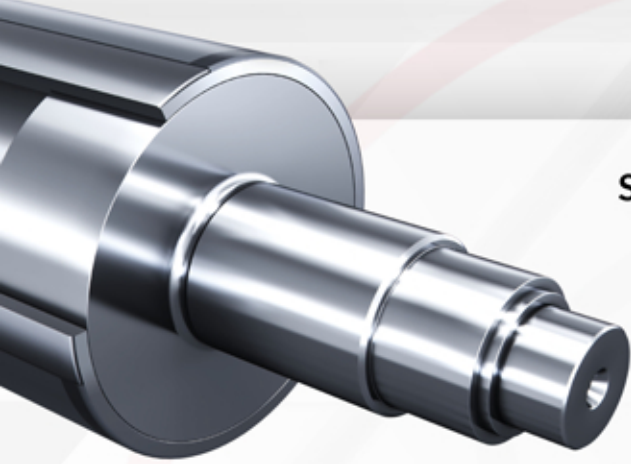
Label Industry



www.simecgroup.com

Anilox Construction

100% in-house manufacturing of light rollers bodies with steel tube and stainless steel journals . Total control over the process and important benefits for customers as for delivery terms and price.



Steel tube with low wall thickness and internally bored

Stainless steel journals

Ceramic coating in chromium oxide

Laser engraving according to specs

Starlox Coating

New high-density ceramic coating for extra fine engravings up to 750 lines/cm. Longer lifetime of the product and reduction of cleaning operations.



Chromium Oxide 99,5 %

Porosity 2%

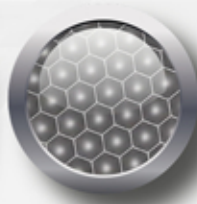
Hardness 1380 hv

Thickness 0,175 mm

Engravings up to 750 L/cm



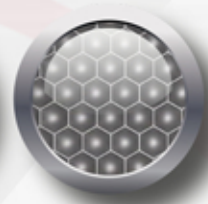
Wide range of engraving configurations available for any customer's printing requirement, including HD printing



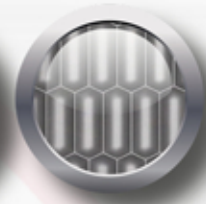
30° NE



70° DC



60° NE



HF

Pre-selected engravings with different cell shapes for white and coatings

WATER COLOR

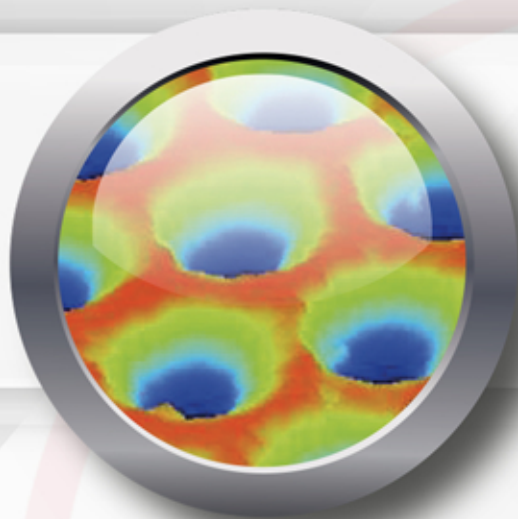
APPLICATION	ENGRAVINGS	SCREEN	VOLUME
WHITE	NE	100	13
WHITE	NE	120	12
WHITE	DC	120	11
WHITE	DC	140	10
FULL BACKGROUND	NE	120	11
FULL BACKGROUND	NE	130	10
FULL BACKGROUND	NE	140	9,5
FULL BACKGROUND	DC	140	10,5
FULL BACKGROUND	DC	160	9
FULL BACKGROUND	DC	180	8
PANTONE + DRAWINGS	NE	160	9
PANTONE + DRAWINGS	DC	200	6,5
BAR CODE	NE	200	7
BAR CODE	DC	240	5,5
THIN TEXTS	NE	180	8
THIN TEXTS	DC	220	6
DEGRADE	NE	260	6
DEGRADE	DC	300	5
DEGRADE	DC	320	4,5
PROCESS 38-44 L/Cm	NE	320	4,8
PROCESS 38-44 L/Cm	NE	340	4,5
PROCESS 38-44 L/Cm	DC	340	4,4
PROCESS 38-44 L/Cm	NE	380	4,2
PROCESS 38-44 L/Cm	DC	380	4
PROCESS 38-44 L/Cm	DC	400	3,8
PROCESS 54-60 L/Cm	NE	400	3,8
PROCESS 54-60 L/Cm	NE	420	3,5
PROCESS 54-60 L/Cm	NE	440	3,2
PROCESS 54-60 L/Cm	DC	480	3,5
PROCESS 54-60 L/Cm	DC	500	3
PROCESS 54-80 L/Cm	NE	440	3,2
PROCESS 54-80 L/Cm	NE	460	3
PROCESS 54-80 L/Cm	DC	540	2,6

U.V. COLOR

APPLICATION	ENGRAVINGS	SCREEN	VOLUME
WHITE	NE	100	12
WHITE	NE	120	11
WHITE	DC	120	11
WHITE	DC	140	10
FULL BACKGROUND	NE	120	9
FULL BACKGROUND	NE	130	10
FULL BACKGROUND	DC	140	9
FULL BACKGROUND	NE	160	8
FULL BACKGROUND	DC	180	8,5
FULL BACKGROUND	DC	200	7
PANTONE + DRAWINGS	NE	180	7
PANTONE + DRAWINGS	DC	200	6,5
BAR CODE	NE	220	6
BAR CODE	DC	260	5
THIN TEXTS	NE	200	6,5
THIN TEXTS	DC	240	5,5
DEGRADE	NE	300	6
DEGRADE	DC	320	5
DEGRADE	DC	360	4,5
PROCESS 38-44 L/Cm	NE	280	4,8
PROCESS 38-44 L/Cm	NE	320	4,5
PROCESS 38-44 L/Cm	NE	340	4,2
PROCESS 38-44 L/Cm	DC	340	4
PROCESS 38-44 L/Cm	DC	380	3,8
PROCESS 38-44 L/Cm	DC	400	3,5
PROCESS 54-60 L/Cm	NE	400	3,5
PROCESS 54-60 L/Cm	NE	420	3,2
PROCESS 54-60 L/Cm	NE	440	3
PROCESS 54-60 L/Cm	DC	480	3,5
PROCESS 54-60 L/Cm	DC	500	3
PROCESS 54-80 L/Cm	NE	440	3,2
PROCESS 54-80 L/Cm	NE	460	3
PROCESS 54-80 L/Cm	NE	500	2,5
PROCESS 54-80 L/Cm	DC	540	2,3

First Meter Run Guaranteed

Anilox specifications repeatability and reproducibly guaranteed by interferometry
All products are inspected and certified using this technology



F.M.R.G.

Our breakthrough in Anilox management
The Label industry will enter our SDB new business model starting January 2018.

This will bring important benefits to our customers thanks to pre-selected Anilox configurations suited to specific press models and applications and very short delivery times.

To discover all advantages contact: label@simecgroup.com

SDB

Anilox Intelligence



Simec Group srl - Via Verga 17 21057 - Olgiate Olona (Varese) - Italy
www.simecgroup.com

Telefono: +39 0331/393900 Fax: +39 0331/323382