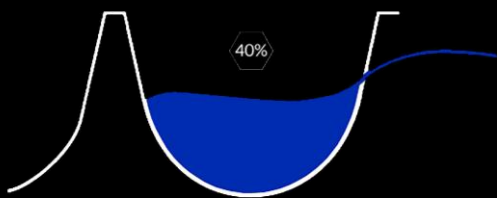


1 cell

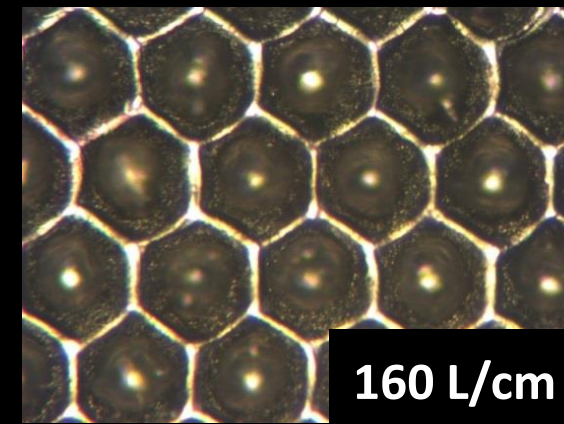
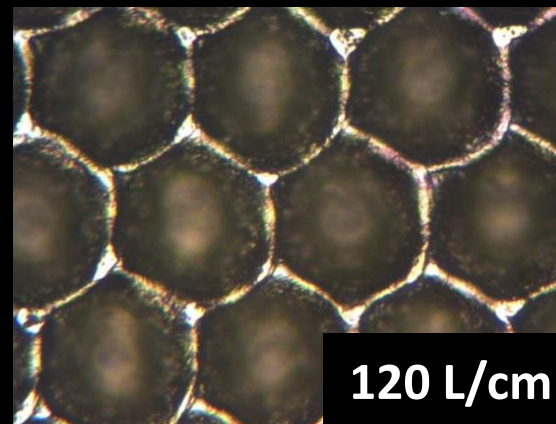
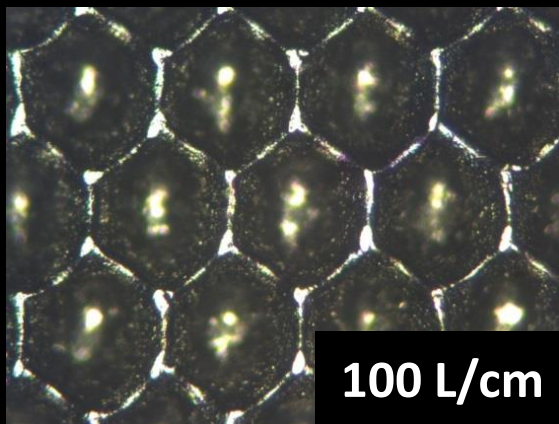


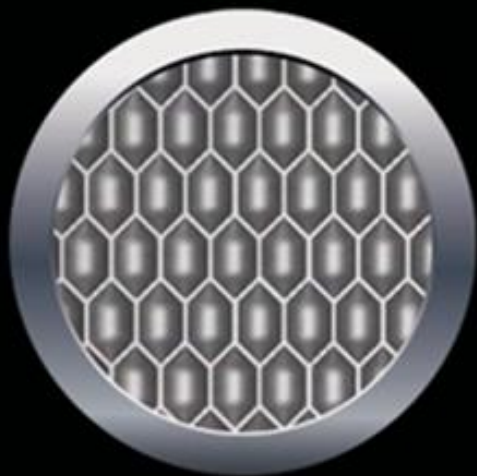
Ink release
40-45%

This type of engraving is the most requested and can be used on any type of printing press, whether it is aged or a latest generation one, and for any type of print, including High Quality prints.

Simec Group has codified the engraving specs for every press machine depending on blade system, working speeds and all other features necessary for keeping the volume released constantly from the very first printed meter.

The screen range, depending on the different types of support and on the desired print results, extends from 80 lines/cm up to 500 lines/cm, for HiQ prints.

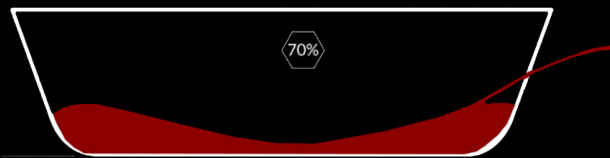




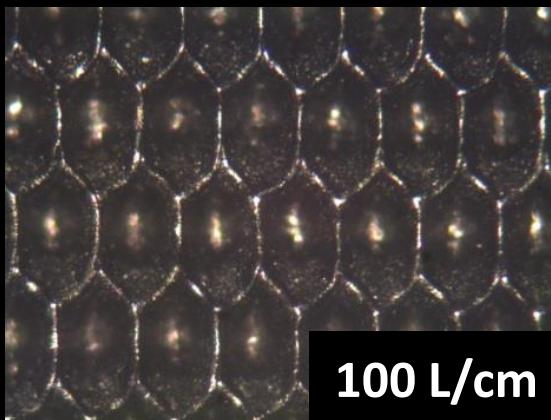
2 cells

Cells with angle 70° have a higher ink release coefficient than traditional ones with angle 60° but they require a careful selection to prevent the benefits from becoming threats. That's why for most of the corrugated printing presses therefore tested and selected, for most of the corrugated press machines, specific screening lines for the different types of printing.

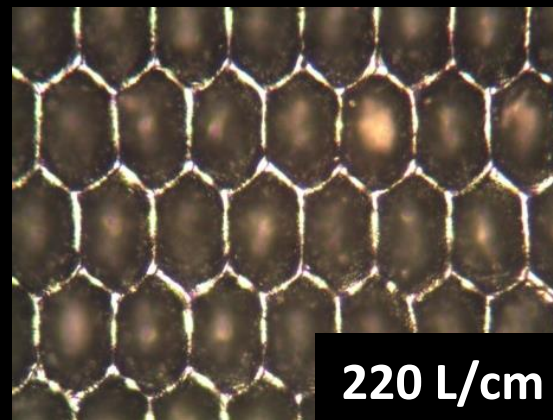
The screen selected for the DC engravings go from 120 lines/cm up to 500 lines/cm (for HiQ prints).



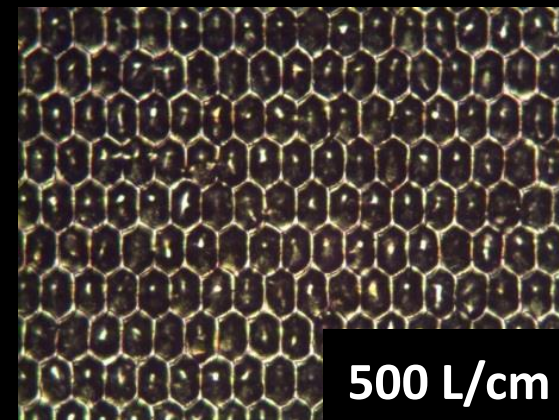
*Ink released
60-70%*



100 L/cm



220 L/cm



500 L/cm