



# STARLOX

POWERED BY

S I M E C G R O U P



**LASER ENGRAVING SINCE 1987**

[www.simecgroup.com](http://www.simecgroup.com)



# STARLOX

POWERED BY  
SIMEC GROUP

## ANILOX ANILOX SLEEVE



All production steps are internally-made. Simec controls 100% of production chain being able to guarantee a high quality standard.

The anilox sleeve, for its constructive characteristics, needs specific coating equipments. Today Simec can offer a quality of coating which is able to guarantee high resistance to abrasion and elimination of scoring line phenomena. Thanks to the high achieved density, it's possible to guarantee homogeneity and high quality of engraving definition.

**100% PRODUCT AT KM 0**



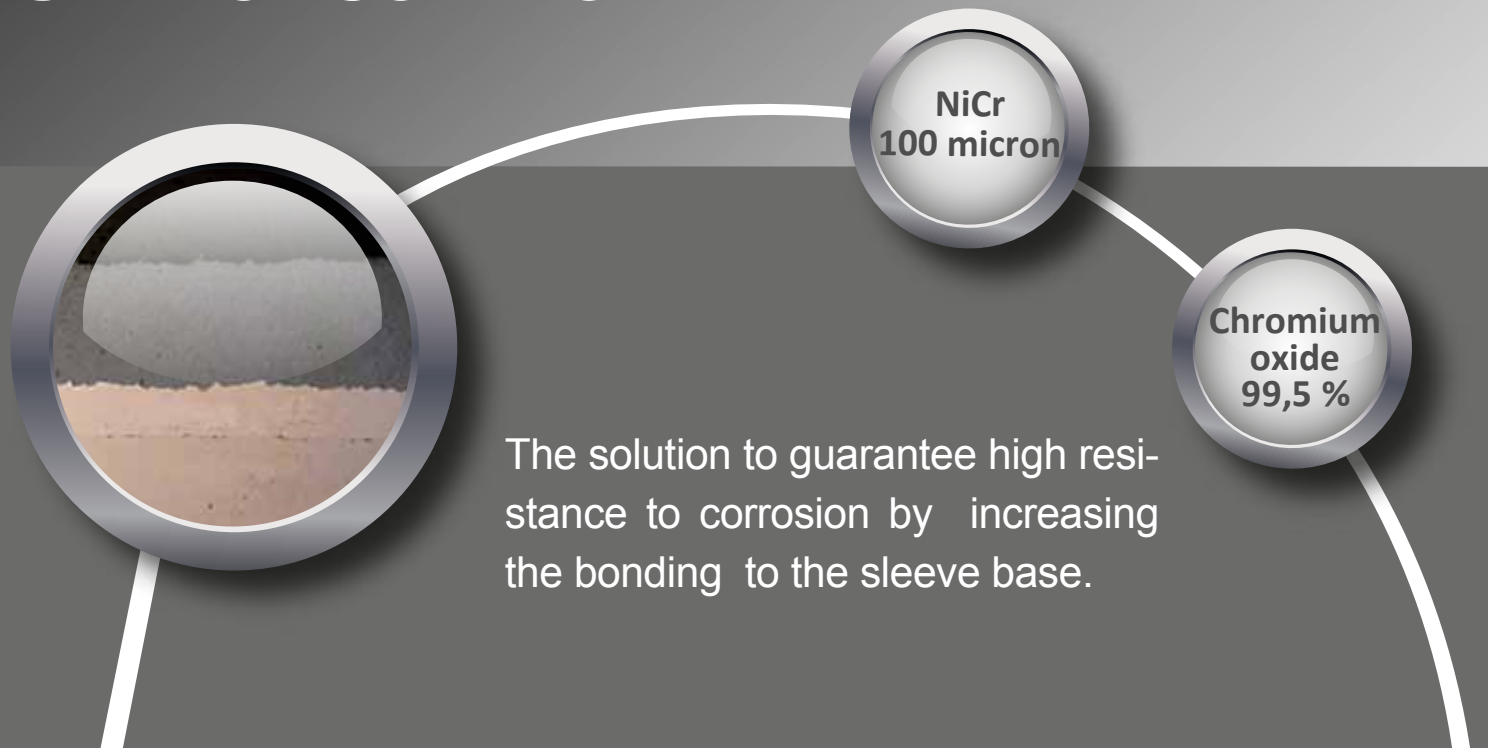
# STARLOX

POWERED BY  
SIMEC GROUP

## STARLOX COATING



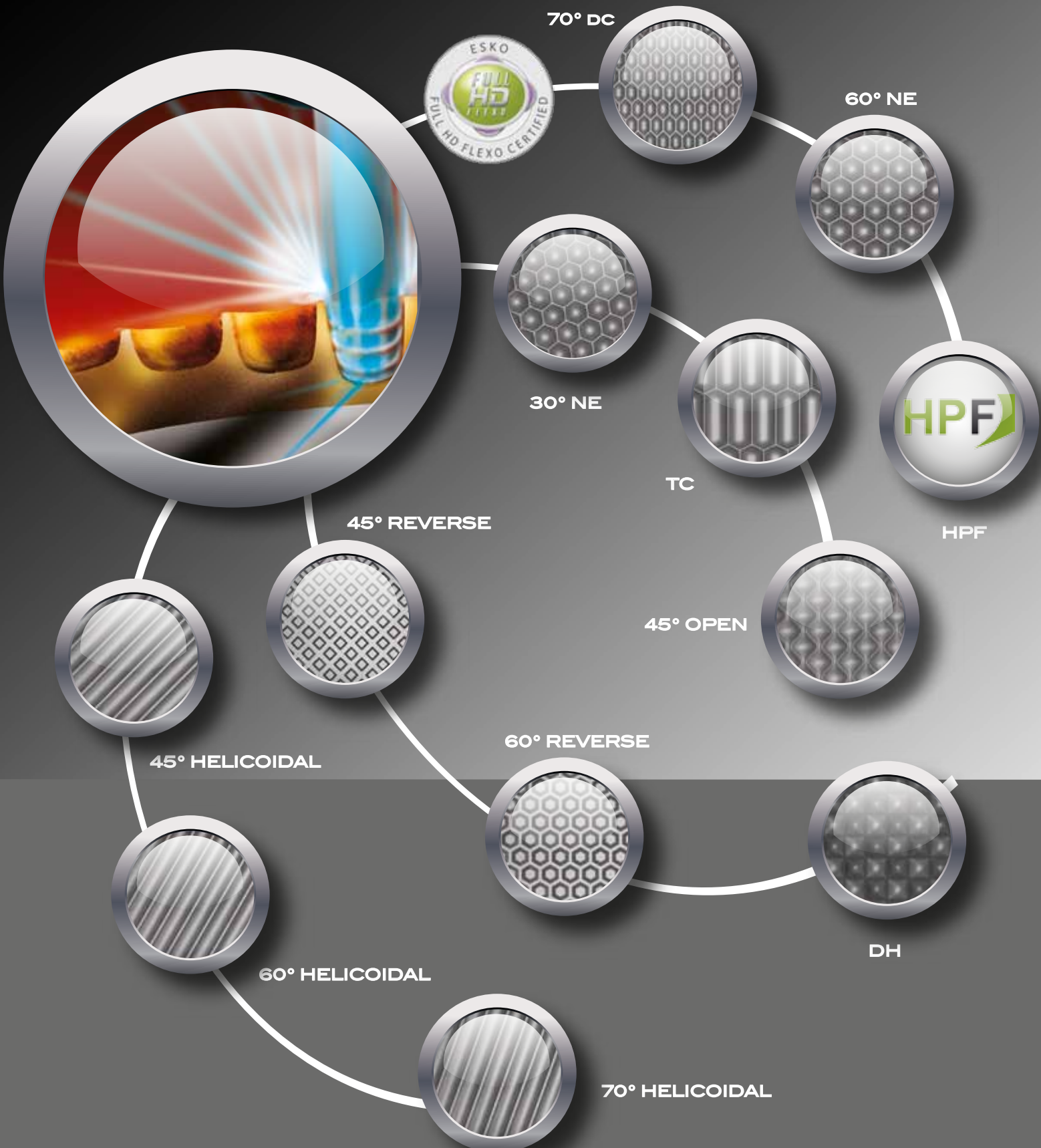
## STARLOX COATING PN





# STARLOX

POWERED BY  
S I M E C G R O U P







# STARLOX

POWERED BY  
SIMEC GROUP

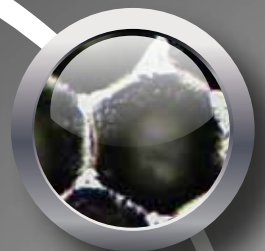
## KISS TOUCH



BEFORE



AFTER



Guarantee of perfect contact surface with the doctor blade from the first printed meter.

## FIRST METER RUN GUARANTEED

